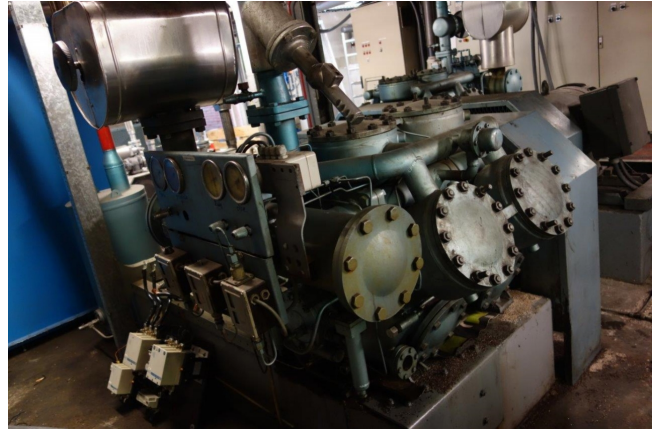


# Grasso K4020x110

## Specifications

Hersteller	Grasso
Typ	K4020x110
Kältemittel	NH 3 (ammonia)
kW at 0°C/+40°C	662,7
kW at -5°C/+40°C	532
kW at -10°C/+40°C	418,4
Anlaufentlastung	✓
Leistungsregelung	✓
Auf einem Stahlrahmen	✓
Druckschalter	✓
Druckmanometer	✓
Ölabscheider	✓
Bemerkungen	Including Electromotor // Pulley Compr: 720 // Capacity based on Grasso RC 611
Größe	1600x1100x1300 mm (LxWxH)
Stock	1



## Description

### Used Grasso K4020x110

